

Classroom Based Assessment - 3 (Summative assessment-2) (2023-24)

UDISE Code: _____	Class-Subject: 8-Science
Child ID: _____	No. of Questions: _____
Child Name: _____	Duration: _____

Note: 1. Answer all the questions.

2. Put correct answer in the brackets given below.

3. Each question carries 2 mark.

20 x 2M = 40M

1) Which is not an exhaustible natural resource? ()

- A) Sunlight B) Petroleum C) Natural gas D) Wildlife

2) When two forces applied on an object are equal and opposite, then these forces [

- A) may move the object
 B) may stop the object
 C) may move the object and also cause a change in its shape
 D) do not move the object but may cause a change in its shape

3) Suppose your writing desk is tilted a little. A book kept on it, starts sliding down. The figure, showing the correct direction of frictional-force acting on it, is ()



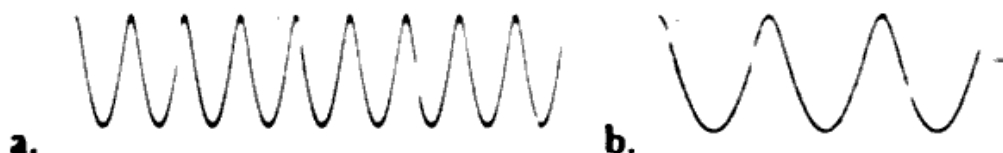
4) Friction always ()

- (a) opposes the motion (b) helps the motion (c) both (a) and (b) (d) none of these

5) Four children were asked to arrange forces due to rolling, static and sliding frictions in decreasing order. Their arrangements are given below. Choose the correct arrangement. ()

- (a) rolling, static, sliding (b) rolling, sliding, static (c) static, sliding, rolling (d) sliding, static, rolling

6) Identify the type of frequency in the below given pictures. ()



- A) a. High frequency b. low Frequency B) a. Low frequency, b. low frequency
 B) a. Normal frequency D) None

7) A pendulum oscillates 40 times in 4 seconds. Find its time period and frequency. ()

- A) 10Hz B) 20 Hz C) 15 Hz D) 5 Hz

8) Image formed by a plane mirror is ()

- A) virtual, behind the mirror and enlarged.
 B) virtual, behind the mirror and of the same size as the object.
 C) real at the surface of the mirror and enlarged
 D) real, behind the mirror and of the same size as the object

9) Which is non-combustible substance? ()

- (A) Wood (B) Paper (C) Iron nails (D) Straw

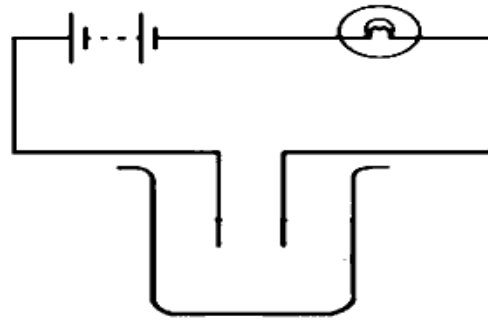
10) Estrogen : Milk, Testosterone : _____ ()

- (A) Sperm cells (B) Goitre (C) Diabetes (D) None

11) Robert Hooke observed cells in _____ ()

- (A) Root (B) Leaf (C) Bark (D) Peel

12) Prem set up an experiment as shown below. ()



He found that the bulb glowed. Which of the following actions would result in the bulb NOT glowing?

- A) Adding a few drops of Sulphuric acid to the salt water
- B) Replacing the carbon rods with copper plates
- C) Dropping some metal coins into the salt water.

D) Replacing the salt water with distilled water

13) Pseudopodia in Amoeba is helpful in _____ ()

- (A) Food capture (B) Movement (C) Food capture and movement (D) Food capture, Respiration

14) Correct statement about tissues among

- (A) Group of cells are tissues (B) They form body organic systems (C) Basic units of life (D) Perform same function ()

(A) (a) (b)

(B) (b) (c)

(C) (b) (d)

(D) (a) (d)

15) Who discovered Penicillin?

(A) Alexander Fleming

(B) Robert Koch

(C) Louis Pasteur

(D) Edward Jenner ()

16) Housefly spread the disease like

- Malaria (B) Cholera (C) Typhoid (D) B and C <https://www.apboardonline.com> ()

17) About 78% of air around us is

(A) Oxygen

(B) Hydrogen

(C) Carbon

(D) Nitrogen ()

18) Example for weedicide

(A) DDT

(B) Heptachlore

(C) Aldrin

(D) 2, 4 -D ()

19) Which of the following is the cause of the condition shown below ()



A) Lack of calcium in the bones

C) Lack of iodine in the diet

B) Excess of iron in the blood

D) Lack of potassium in the diet

20) Adolescence age is between ()

A) 12-18 years

B) 11-19 years

C) 14-20 years

D) 11-12 years

I. Answer all the questions (40 MARKS)

21) "Cells are the building blocks of life". Explain. 5 MARKS

22) Describe with the help of a diagram an instrument which can be used to detect a charged body. 5 MARKS

23) What will happen if 5 MARKS

a) we go on cutting trees?

b) the top layer of soil is exposed?

c) the habitat of an animal is disturbed?

24) Make a labelled diagram of a candle flame 5 MARKS

25) An archer stretches her bow while taking aim at the target. She then releases the arrow, which begins to move towards the target. Based on this information fill up the gaps in the following statements using the following terms. (muscular, contact, non-contact, gravity, friction, shape, attraction) **5 MARKS**

(a) To stretch the bow, the archer applies a force that causes a change in its

(b) The force applied by the archer to stretch the bow is an example of force.

(c) The type of force responsible for a change in the state of motion of the arrow is an example of a force.

(d) While the arrow moves towards its target, the forces acting on it are due to and of air

26) Suppose you are in a dark room. Can you see objects in the room? Can you see objects outside the room? Explain. **5 MARKS**

27) Sketch larynx and explain its function in your own words. **5 MARKS**

28) What is the difference between a zoo and a wildlife sanctuary? **5 MARKS**

<https://www.apboardonline.com>

Whatsapp @ 9300930012

Send your old paper & get 10/-

अपने पुराने पेपर्स भेजे और 10 रुपये पायें,

Paytm or Google Pay से

<https://www.apboardonline.com>